

## Performance Curves for the 430 Series

MODEL/SIZE	R.P.M.	CATALOG PAGE	PDF PAGE
1-1/2 x 3 x 9	3500/1750	401	2
1-1/2 x 3 x 11	3550/1750	402	3
2 x 4 x 9	3500/1750	403	4
2 x 4 x 11	3550/1750	404	5

# 1-1/2 x 3 x 9 SERIES 430

## ENCLOSED IMPELLER

Section **430** Page **401**

Date **January 2001**

Supersedes Section 430 Page 401

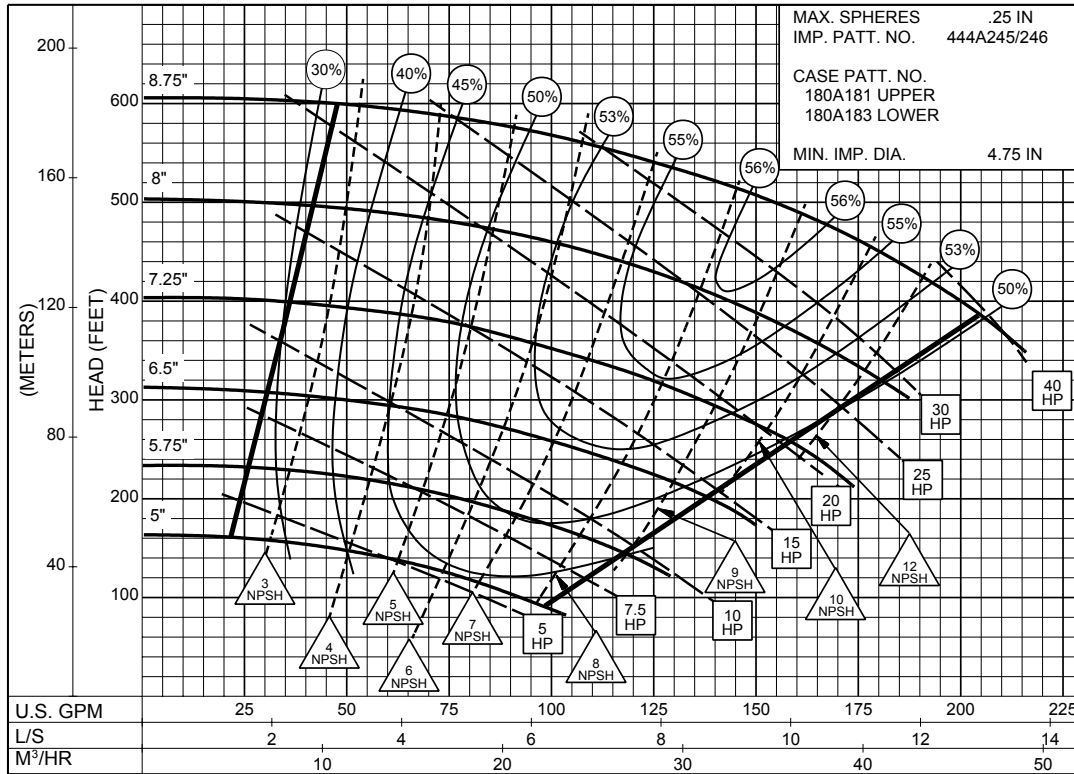
Dated May 1995

SIZE : 1-1/2x3x9

TYPE : 430

IMPELLER : Enclosed

R. P. M. : 3500



**3500**  
R.P.M

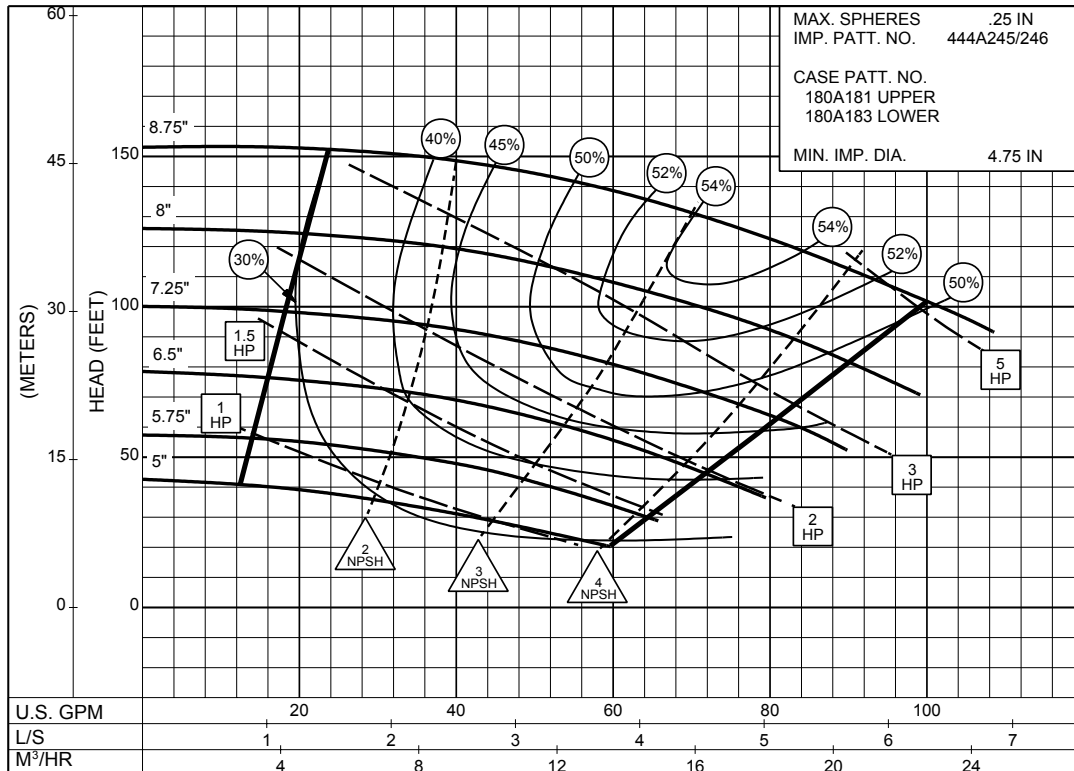
1PC-116118A

SIZE : 1-1/2x3x9

TYPE : 430

IMPELLER : Enclosed

R. P. M. : 1750



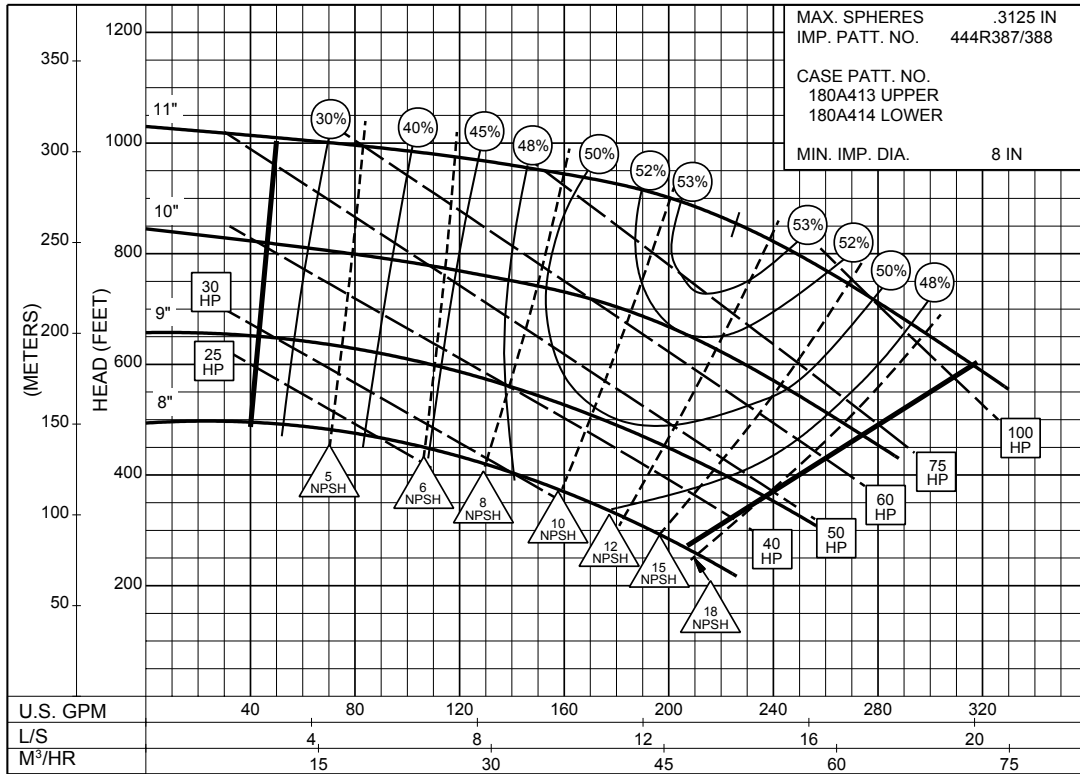
**1750**  
R.P.M

1PC-116119A

**ENCLOSED IMPELLER**

Supersedes Section 430 Page 402  
 Dated May 1995

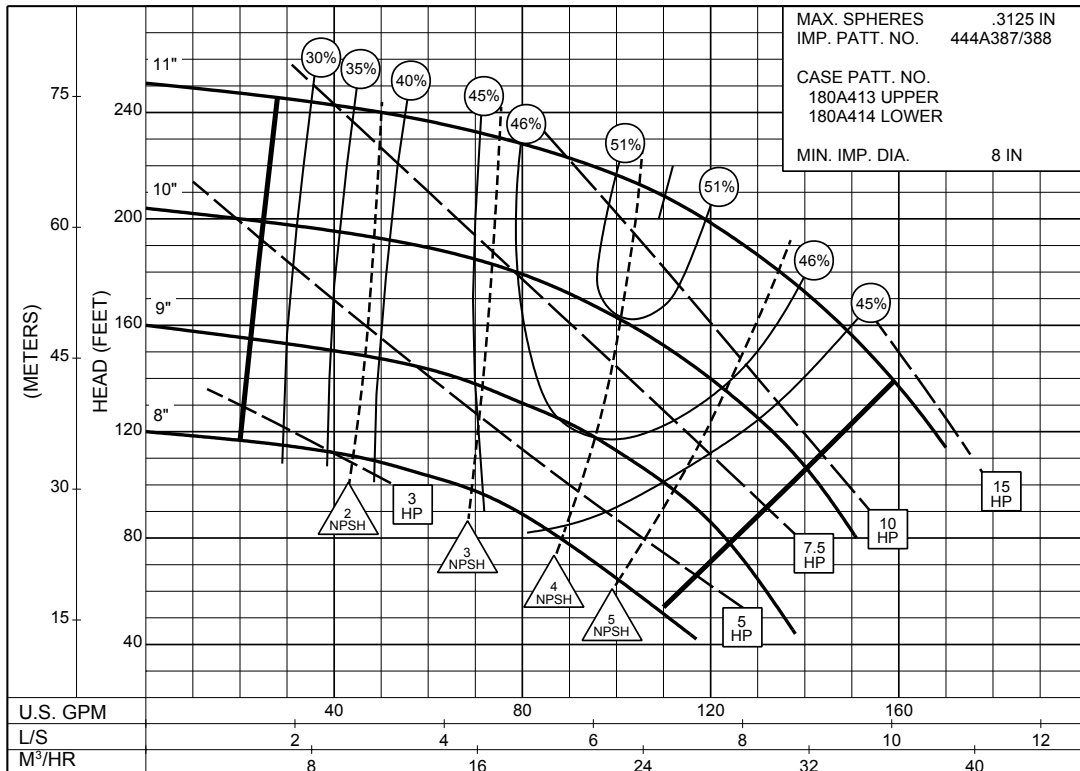
**SIZE : 1-1/2x3x11 TYPE : 431 IMPELLER : Enclosed R. P. M. : 3550**



**1PC-158883**

**3550**  
**R.P.M**

**SIZE : 1-1/2x3x11 TYPE : 431 IMPELLER : Enclosed R. P. M. : 1750**



**1PC-158908**

**1750**  
**R.P.M**

# 2 x 4 x 9 SERIES 430

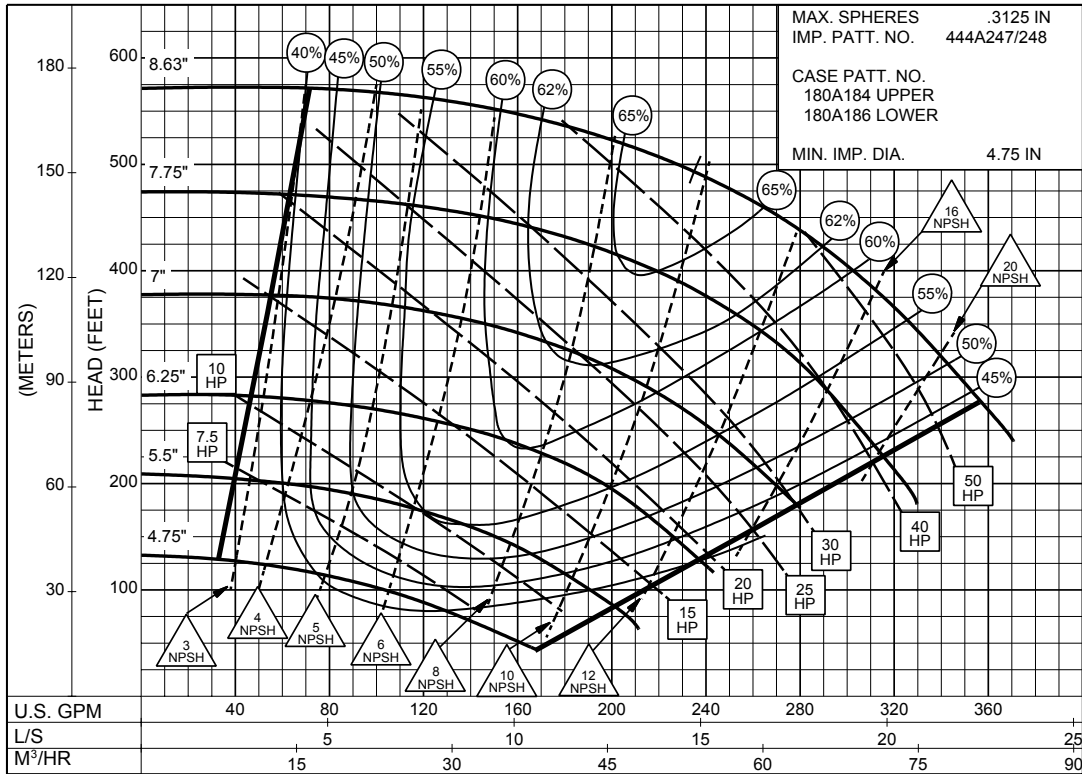
## ENCLOSED IMPELLER

SIZE : 2x4x9

TYPE : 430

IMPELLER : Enclosed

R. P. M. : 3500



1PC-116120A

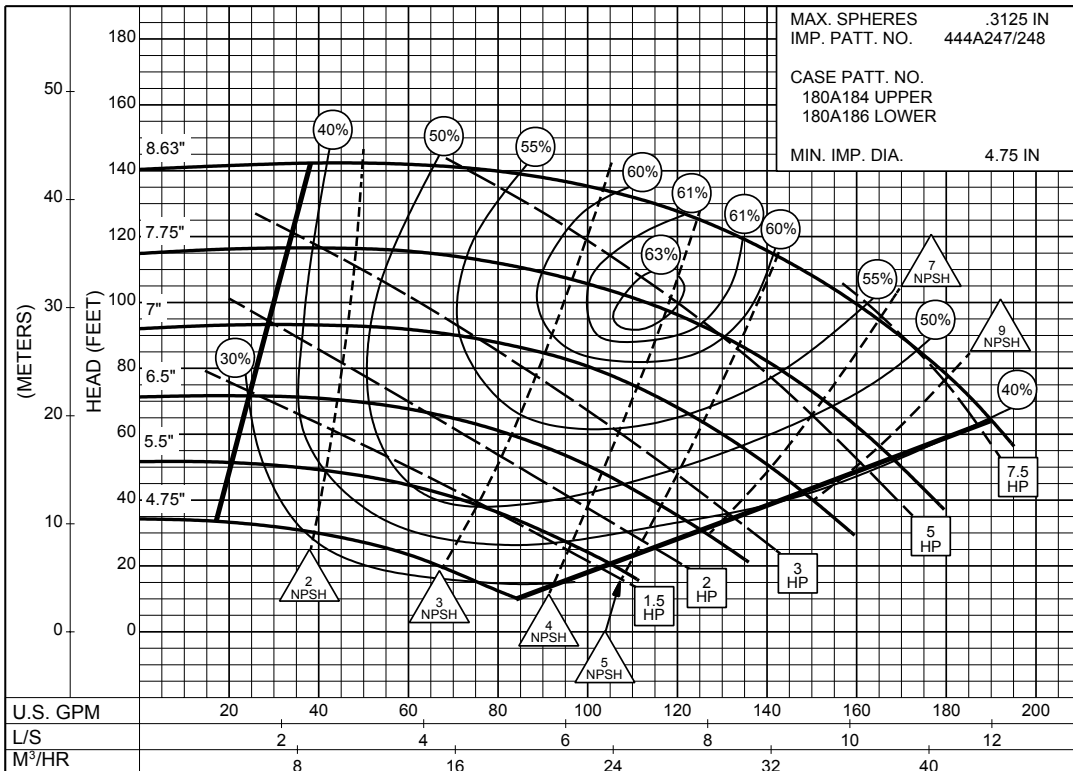
**3500**  
R.P.M

SIZE : 2x4x9

TYPE : 430

IMPELLER : Enclosed

R. P. M. : 1750



1PC-116121A

**1750**  
R.P.M

# 2 x 4 x 11 SERIES 430

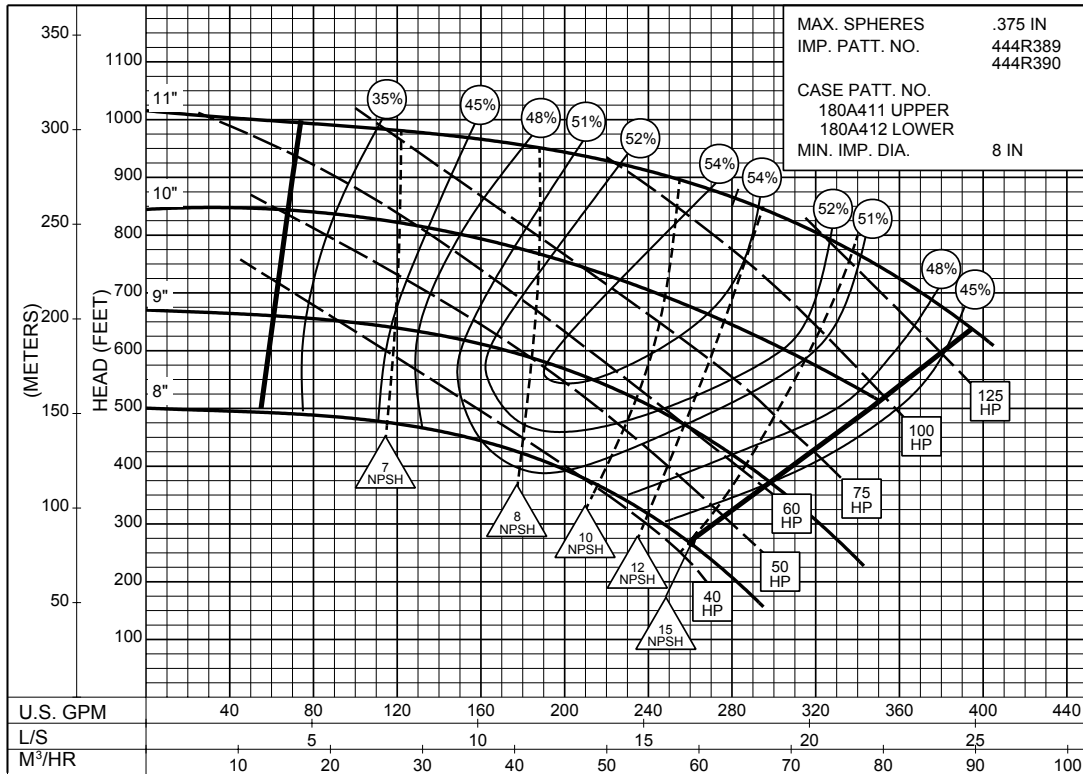
## ENCLOSED IMPELLER

SIZE : 2x4x11

TYPE : 431

IMPELLER : ENCLOSED

R. P. M. : 3550



PC-158291

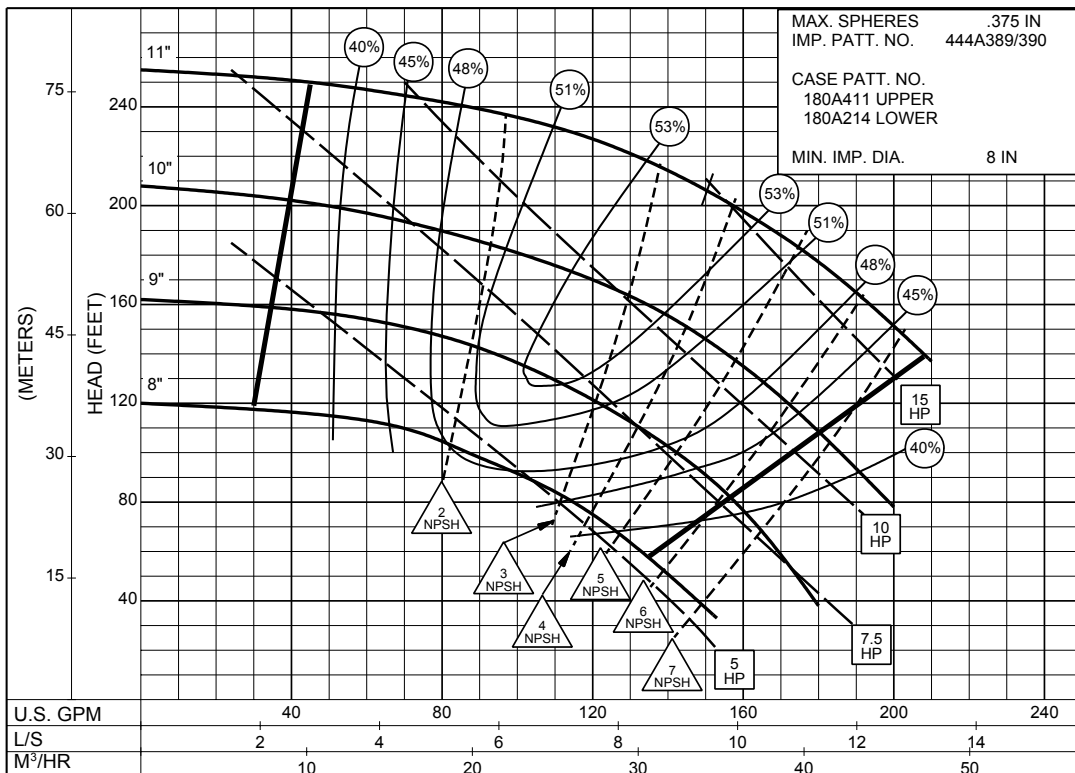
**3550**  
R.P.M

SIZE : 2x4x11

TYPE : 430

IMPELLER : Enclosed

R. P. M. : 1750



PC-158292

**1750**  
R.P.M