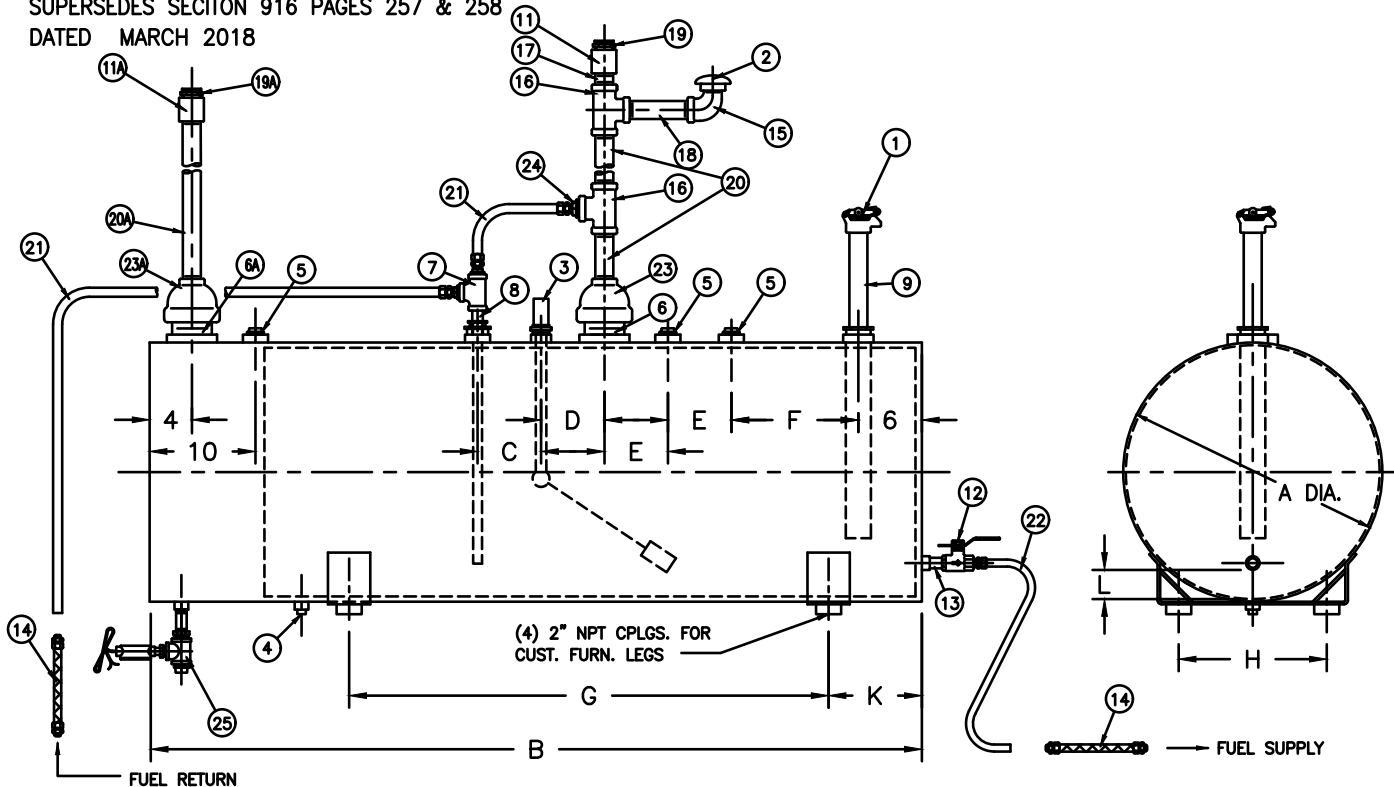


FAIRBANKS NIJHUIS FIRE PUMPS  
DOUBLE WALL FUEL TANKS WITH STANDARD FITTINGS

DATED SEPTEMBER 2022

SUPERSEDES SECTION 916 PAGES 257 & 258

DATED MARCH 2018



NOMINAL TANK SIZE IN GALLONS	USABLE VOLUME IN GALLONS	A	B	C	D	E	F	G	H	K	L	Y	Z
61	55	21 (533)	56 (1422)	6 (152)	6 (152)	6 (152)	9 (229)	27 (686)	12 (305)	9 (229)	2.4 (60)	2" NPT	2" NPT
119	105	24.5 (622)	72 (1829)	6 (152)	6 (152)	6 (152)	13 (330)	44 (1118)	14 (356)	8.5 (216)	2.6 (67)	2" NPT	2" NPT
187	165	31 (787)	72 (1829)	6 (152)	6 (152)	6 (152)	13 (330)	44 (1118)	16 (406)	8.5 (216)	3.5 (89)	2" NPT	3" NPT
231	210	35 (889)	70 (1778)	6 (152)	6 (152)	6 (152)	11 (279)	44 (1118)	23 (584)	7.5 (191)	3.9 (98)	3" NPT	3" NPT
300	270	39 (991)	72 (1829)	6 (152)	6 (152)	6 (152)	13 (330)	44 (1118)	23 (584)	8.5 (216)	4.3 (108)	3" NPT	3" NPT
359	320	39 (991)	84 (2134)	6 (152)	6 (152)	6 (152)	25 (635)	44 (1118)	23 (584)	14.5 (368)	4.3 (108)	3" NPT	3" NPT
451	410	46 (1168)	76.5 (1943)	6 (152)	6 (152)	6 (152)	17.5 (445)	44 (1118)	30 (762)	10.75 (273)	4.9 (124)	3" NPT	4" NPT
572	515	49 (1245)	84 (2134)	6 (152)	6 (152)	6 (152)	25 (635)	44 (1118)	30 (762)	14.5 (368)	5.3 (133)	3" NPT	4" NPT
704	640	61 (1549)	69 (1753)	6 (152)	6 (152)	6 (152)	10 (254)	44 (1118)	30 (762)	7 (178)	6.4 (162)	3" NPT	4" NPT
849	766	65 (1651)	72 (1829)	6 (152)	6 (152)	6 (152)	13 (330)	44 (1118)	30 (762)	8.5 (216)	6.8 (171)	3" NPT	4" NPT
978	880	65 (1651)	81 (2057)	6 (152)	6 (152)	6 (152)	22 (559)	44 (1118)	30 (762)	13 (330)	6.8 (171)	3" NPT	6" NPT
1100	993	65 (1651)	90 (2286)	6 (152)	6 (152)	6 (152)	31 (787)	44 (1118)	30 (762)	17.5 (445)	6.8 (171)	3" NPT	6" NPT

COMPONENTS FURNISHED BY OTHERS		
ITEM NO.	QTY. REQ'D	DESCRIPTION
20	2	2" SIZE PIPING FOR VENT
20A	1	1/2" SIZE PIPING FOR VENT
21	1	1/2" TUBING AND FITTINGS OR 1/2" BLACK PIPE
22	1	3/4" TUBING AND FITTINGS OR 3/4" BLACK PIPE

COMPONENTS FURNISHED BY PENTAIR		
ITEM NO.	QTY. REQ'D	DESCRIPTION
1	1	2" NPT LOCKABLE FUEL CAP
2	1	2" NPT SCREENED TANK VENT
3	1	FUEL GAUGE
4	1	1" NPT DRAIN PLUG
5	3	2" NPT PIPE PLUG
6	1	4" NPT CLOSE NIPPLE
	-	NOT REQUIRED (451,572,704,849,978,1100)
6A	1	4" NPT CLOSE NIPPLE
7	1	1/2" NPT TEE
8	1	1/2" NPT CLOSE NIPPLE
9	1	2" FUEL FILL BLACK PIPE
10	1	2"x2"x2" NPT TEE
11	1	2" NPT PIPE COUPLING
11A	1	1/2" NPT PIPE COUPLING
12	1	3/4" NPT LOCKABLE FUEL VALVE
13	1	3/4" NPT CLOSE NIPPLE
14	2	FUEL HOSES FOR SUPPLY & RETURN (FURNISHED BY ENGINE MFR.)
15	1	2" NPT STREET ELBOW
16	1	2"x2"x2" NPT TEE
17	1	2" NPT CLOSED NIPPLE
	2	2" NPT CLOSED NIPPLE (978,1100)
18	1	2" NPT X 6" LONG NIPPLE
19	1	2" NPT EMERGENCY VENT
19A	1	1/2" NPT EMERGENCY VENT
23	1	4"x2" NPT REDUCER
	-	NOT REQUIRED (451,572,704,849,978,1100)
23A	1	4"x2" NPT REDUCER
24	1	2"x1/2" NPT REDUCER
25	1	LEAK DETECTOR

DIESEL FUEL TANK NOTES:

- TANKS ARE CONSTRUCTED AND LABELED IN ACCORDANCE WITH UL-142.
- FITTINGS SHOWN ARE CONSISTENT WITH N.F.P.A. 30 AND UL-142.
- TANK TO BE PITCHED TOWARD DRAIN 1/4" PER FOOT WITH OUTLET ON THE SAME ELEVATION AS ENGINE FUEL PUMP. MEANS OF ELEVATING TANK (BY OTHERS) MAY BE REQUIRED.
- USABLE TANK VOLUME IS TOTAL CAPACITY LESS 5% FOR SUMP AND LESS 5% FOR EXPANSION.

ILLUSTRATION NOTES:

- ALL DIMENSIONS ARE IN INCHES (mm) AND MAY VARY ±.25" (6mm).
- COMPONENTS SHOWN ARE SHIPPED LOOSE FOR FIELD ASSEMBLY.
- ILLUSTRATION IS FOR COMPONENT IDENTIFICATION ONLY. ACTUAL INSTALLATION MUST MEET LOCAL CODES AND ALL APPLICABLE STANDARDS.
- REFER TO SECTION 916 PAGE 259 FOR DETAILS OF PENTAIR FURNISHED COMPONENTS.

