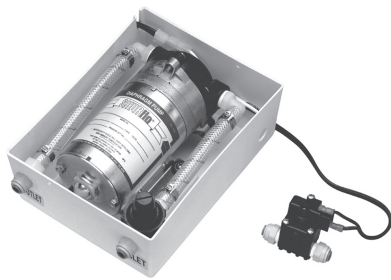




# SHURFLO® 80 SERIES R.O. BOOST SYSTEM

## DELIVERY PUMP FOR R.O. APPLICATIONS

Delivery Pump 10 gph (38 Lph): 80-121-00  
Delivery Pump 0.60 gph (2.3 Lph): 80-121-18  
[Enclosure not included]



### APPLICATIONS

R.O. Systems

### FEATURES • BENEFITS

- Positive displacement three (3) chamber diaphragm pump
- Self-priming up to 8 ft (2.4 m) vertical
- Can run dry without damage
- Non-corded
- Quiet continuous operation
- Includes full tank shut-off switch
- 80 psi (5.5 bar) internal bypass

### INSTALLATION TIPS

Can mount in any position.  
No enclosure.

### OPERATION TIPS

Self-priming.  
Tank shut-off switch is included.

### SIZING

Service Flow Rate:  
80-121-00 - 10 gph (38 Lph),  
80-121-18 - 0.6 gph (2.3 Lph)

Ports:  
80-121-00: 3/8" FPT,  
80-121-18: 1/4" FPT

# SHURFLO® 80 SERIES R.O. BOOST SYSTEM

## 80-121-00 • 80-121-18

### SPECIFICATIONS

#### Service Flow Rate

80-121-00: 10 gph (38 Lph)

80-121-18: 0.6 gph (2.3 Lph)

#### Voltage

80-121-00: 24 Vdc

80-121-18: 115 Vac/24 Vdc transformer

#### Pressure

90 psi (6.2 bar)

#### Prime

Self-priming up to 8 ft (2.4 m) vertical

#### Ports

80-121-00: 3/8" FPT

80-121-18: 1/4" FPT

#### Materials

Plastics: Nylon

Valves: EPDM

Diaphragm: Santoprene

Fasteners: Stainless steel

#### Bypass

Internal @ 80 psi (5.5 bar)

#### Weight

4.1 lbs (1.86 kgs)

### WARRANTY

Limited Pentair® Warranty is valid from the date of manufacture or with proof of purchase:

2088 - One year  
Water Boost - One year  
Water Pressure Reducer Valve - One year  
8000, 8025, 8010, 8075, 8095 - One year

Pentair will provide a copy of the warranty upon request.



#### FILTRATION & PROCESSING SOLUTIONS

EVERPURE-SHURFLO WORLD HEADQUARTERS, 1040 MUIRFIELD DRIVE, HANOVER PARK, IL 60133 USA • WWW.EVERPURE.COM  
800.942.1153 MAIN (US ONLY) • 630.307.3000 MAIN • 630.307.3030 FAX • CSEVERPURE@PENTAIR.COM EMAIL

EVERPURE-SHURFLO AUSTRALIA, 1-21 MONASH DRIVE, DANDENONG SOUTH, VIC 3175, AUSTRALIA  
011.1300.576.190 TEL • 011.61.39.562.7237 FAX • AU.EVERPURE@PENTAIR.COM EMAIL

EVERPURE-SHURFLO CHINA, 21F CLOUD 9 PLAZA, NO 1118, SHANGHAI, 200052, CHINA  
86.21.3211.4588 TEL • 86.21.3211.4580 FAX • CHINA.WATER@PENTAIR.COM EMAIL

EVERPURE-SHURFLO INDIA, GREEN BOULEVARD, B-9/A, 7TH FLOOR - TOWER B SECTOR 62, NOIDA - 201301  
91.120.419.9444 TEL • 91.120.419.9400 FAX • INDIACUSTOMER@PENTAIR.COM EMAIL

EVERPURE-SHURFLO EUROPE, PENTAIR WATER BELGIUM BVBA, INDUSTRIEPARK WOLFSTEE, TOEKOMSTLAAN, 30 B-2200 HERENTALS, BELGIUM  
+32.(0).14.283.500 TEL • +32.(0).14.283.505 FAX • SALES@EVERPURE-EUROPE.COM EMAIL

EVERPURE-SHURFLO JAPAN INC., HASHIMOTO MN BLDG. 7F, 3-25-1 HASHIMOTO, MIDORI-KU, SAGAMIHARA-SHI KANAGAWA 252-0143, JAPAN  
81.(0)42.775.3011 TEL • 81.(0)42.775.3015 FAX • INFO@EVERPURE.CO.JP EMAIL

EVERPURE-SHURFLO SOUTHEAST ASIA, SOUTHEAST ASIA, 390 HAVELOCK ROAD, #04-01, KING'S CENTRE, SINGAPORE 169662  
65.6768.5800 TEL • 65.6737.5149 FAX • CSEVERPURE@PENTAIR.COM EMAIL

All Pentair trademarks and logos are owned by Pentair, Inc. or its affiliates. All other registered and unregistered trademarks and logos are the property of their respective owners. Because we are continuously improving our products and services, Pentair reserves the right to change specifications without prior notice. Pentair is an equal opportunity employer.