

Fabricated Flow Diverter/Suction Diffuser

150# PSI

Features:

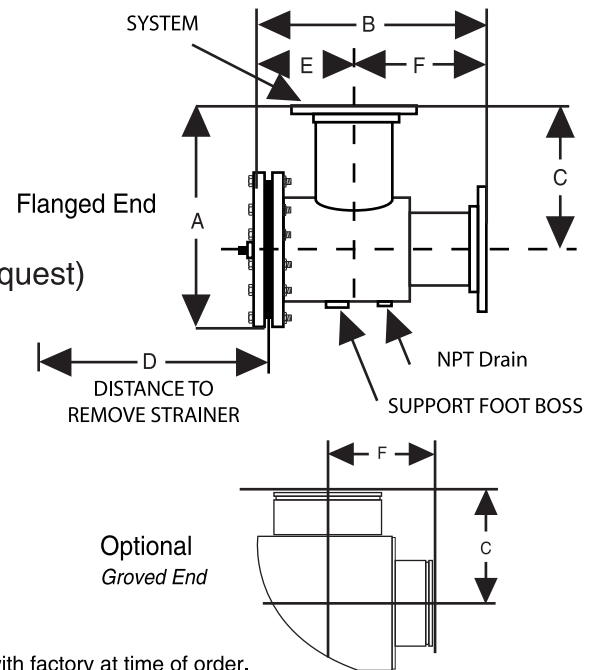
- Carbon Steel Construction
- Space Saving Design
- 20 Mesh Stainless Steel Start up and 5/32" Permanent Strainer combines Strainer & 90° Elbow
- Back Pull Out Strainer
- Class 150 RF Flanged
- Straightening Vanes (Stainless Steel Material upon request)
- Maximum Temperature 450° Degrees

Optional Features:

- Stainless Steel and other materials
- Larger Sizes upon Request
- Davit arms
- Additional pressure classifications

All packaging materials, thread protectors, plastic plugs and caps must be removed before installation.

Dimensions are subject to change without notice, please confirm actual dimensions with factory at time of order.



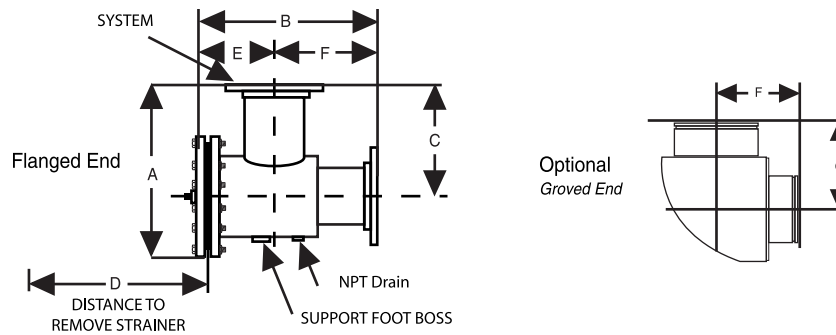
PENTAIR PART NUMBER	PART NUMBER	SIZE	SYSTEM CONN. (IN.)*	PUMP CONN. (IN.)*	A	B	C	D	E	F
RTF	FD-1515-F1	1.5 X 1.5	1.5	1.5	11 1/2	12 1/4	7	6 1/2	5 1/4	7
RTF	FD-0213-F1	2 X 1.25	2	1.25	11 1/2	12 1/4	7	6 1/2	5 1/4	7
RTF	FD-0215-F1	2 X 1.5	2	1.5	11 1/2	12 1/4	7	6 1/2	5 1/4	7
RTF	FD-0202-F1	2 X 2	2	2	11 1/2	12 1/4	7	6 1/2	5 1/4	7
RTF	FD-2515-F1	2.5 X 1.5	2.5	1.5	11 1/2	12 1/4	7	6 1/2	5 1/4	7
RTF	FD-2502-F1	2.5 X 2	2.5	2	11 1/2	12 1/4	7	6 1/2	5 1/4	7
RTF	FD-2525-F1	2.5 X 2.5	2.5	2.5	11 1/2	12 1/4	7	6 1/2	5 1/4	7
RTF	FD-0315-F1	3 X 1.5	3	1.5	11 1/2	12 1/4	7	6 1/2	5 1/4	7
RTF	FD-0302-F1	3 X 2	3	2	11 1/2	12 1/4	7	6 1/2	5 1/4	7
RTF	FD-0325-F1	3 X 2.5	3	2.5	11 1/2	12 1/4	7	6 1/2	5 1/4	7
RTF	FD-0303-F1	3 X 3	3	3	13	13 1/2	8	7 1/2	5 1/2	8
RTF	FD-0415-F1	4 X 1.5	4	1.5	13	13 1/2	8	7 1/2	5 1/2	8
RTF	FD-0402-F1	4 X 2	4	2	13	13 1/2	8	7 1/2	5 1/2	8
RTF	FD-0425-F1	4 X 2.5	4	2.5	13	13 1/2	8	7 1/2	5 1/2	8
RTF	FD-0403-F1	4 X 3	4	3	13	13 1/2	8	7 1/2	5 1/2	8
RTF	FD-0404-F1	4 X 4	4	4	14 1/2	15	9	8 1/2	6	9

F1 = Fabricated 150#

*Grooved end available through 10" as Standard Production. Larger sizes are special and priced on application.



2701 W. Concord Street
 Broken Arrow, Ok 74012
 Toll Free: 866-204-5229 | PH: 918-317-0401 | FAX: 918-317-0407
 www.wheatleyhvac.com | sales@globalflowproducts.com



PENTAIR PART NUMBER	PART NUMBER	SIZE	SYSTEM CONN. (IN.)*	PUMP CONN. (IN.)*	HEIGHT A (IN.)	WIDTH B (IN.)	C	D	E	F
RTF	FD-0525-F1	5 X 2.5	5	2.5	14 1/2	15	9	8 1/2	6	9
RTF	FD-0503-F1	5 X 3	5	3	14 1/2	15	9	8 1/2	6	9
RTF	FD-0504-F1	5 X 4	5	4	14 1/2	15	9	8 1/2	6	9
RTF	FD-0505-F1	5 X 5	5	5	16 1/2	17 1/4	10	10 1/4	7 1/4	10
RTF	FD-0625-F1	6 X 2.5	6	2.5	16 3/4	17 1/4	10	10 1/4	7 1/4	10
RTF	FD-0603-F1	6 x 3	6	3	16 3/4	17 1/4	10	10 1/4	7 1/4	10
RTF	FD-0604-F1	6 x 4	6	4	16 3/4	17 1/4	10	10 1/4	7 1/4	10
RTF	FD-0605-F1	6 x 5	6	5	16 3/4	17 1/4	10	10 1/4	7 1/4	10
RTF	FD-0606-F1	6 x 6	6	6	16 3/4	17 1/4	10	10 1/4	7 1/4	10
RTF	FD-0804-F1	8 x 4	8	4	20	21	12	12 1/4	9	12
RTF	FD-0805-F1	8 x 5	8	5	20	21	12	12 1/4	9	12
RTF	FD-0806-F1	8 x 6	8	6	20	21	12	12 1/4	9	12
RTF	FD-0808-F1	8 x 8	8	8	20	21	12	12 1/4	9	12
RTF	FD-1005-F1	10 x 5	10	5	23 1/2	24 1/2	14	16 3/4	10 1/2	14
RTF	FD-1006-F1	10 x 6	10	6	23 1/2	24 1/2	14	16 3/4	10 1/2	14
RTF	FD-1008-F1	10 x 8	10	8	23 1/2	24 1/2	14	16 3/4	10 1/2	14
RTF	FD-1010-F1	10 x 10	10*	10	23 1/2	24 1/2	14	16 3/4	10 1/2	14
RTF	FD-1206-F1	12 x 6	12	6	28	28	16	19	12	16
RTF	FD-1208-F1	12 x 8	12	8	28	28	16	19	12	16
RTF	FD-1210-F1	12 x 10	12	10	28	28	16	19	12	16
RTF	FD-1212-F1	12 x 12	12	12	28	28	16	19	12	16
RTF	FD-1408-F1	14 x 8	14	8	29 1/2	29 5/8	17	19 7/8	12 5/8	17
RTF	FD-1410-F1	14 x 10	14	10	29 1/2	29 5/8	17	19 7/8	12 5/8	17
RTF	FD-1412-F1	14 x 12	14	12	29 1/2	29 5/8	17	19 7/8	12 5/8	17
RTF	FD-1414-F1	14 x 14	14	14	29 1/2	29.63	17	19.88	12.63	17
RTF	FD-1610-F1	16 x 10	16	10	31.75	31.75	18	21.5	13.75	18
RTF	FD-1612-F1	16 x 12	16	12	31.75	31.75	18	21.5	13.75	18
RTF	FD-1614-F1	16 x 14	16	14	31.75	31.75	18	21.5	13.75	18
RTF	FD-1616-F1	16 x 16	16	16	31.75	31.75	18	21.5	13.75	18
RTF	FD-1812-F1	18 x 12	18	12	43	51 5/32	27	33 3/4	21 5/32	30
RTF	FD-1814-F1	18 x 14	18	14	43	51 5/32	27	33 3/4	21 5/32	30
RTF	FD-2012-F1	20 x 12	20	12	43	51 5/32	27	33 3/4	21 5/32	30
RTF	FD-2014-F1	20 x 14	20	14	43	51 5/32	27	33 3/4	21 5/32	30
RTF	FD-2016-F1	20 x 16	20	16	43	51 5/32	27	33 3/4	21 5/32	30
RTF	FD-2020-F1	20 x 20	20	20	43	51 5/32	27	33 3/4	21 5/32	30
RTF	FD-2414-F1	24 x 14	24	14	48 1/8	58 7/8	28 3/4	33 11/16	22 7/16	36 7/16
RTF	FD-2416-F1	24 x 16	24	16	48 1/8	58 7/8	28 3/4	33 11/16	22 7/16	36 7/16
RTF	FD-2420-F1	24 x 20	24	20	48 1/8	58 7/8	28 3/4	33 11/16	22 7/16	36 7/16

F1 = Fabricated 150#

*Grooved end available through 10" as Standard Production. Larger sizes are special and priced on application.

All packaging materials, thread protectors, plastic plugs and caps must be removed before installation. Dimensions are subject to change without notice, please confirm actual dimensions with factory at time of order.



2701 W. Concord Street
Broken Arrow, Ok 74012
Toll Free: 866-204-5229 | PH: 918-317-0401 | FAX: 918-317-0407
www.wheatleyhvac.com | sales@globalflowproducts.com