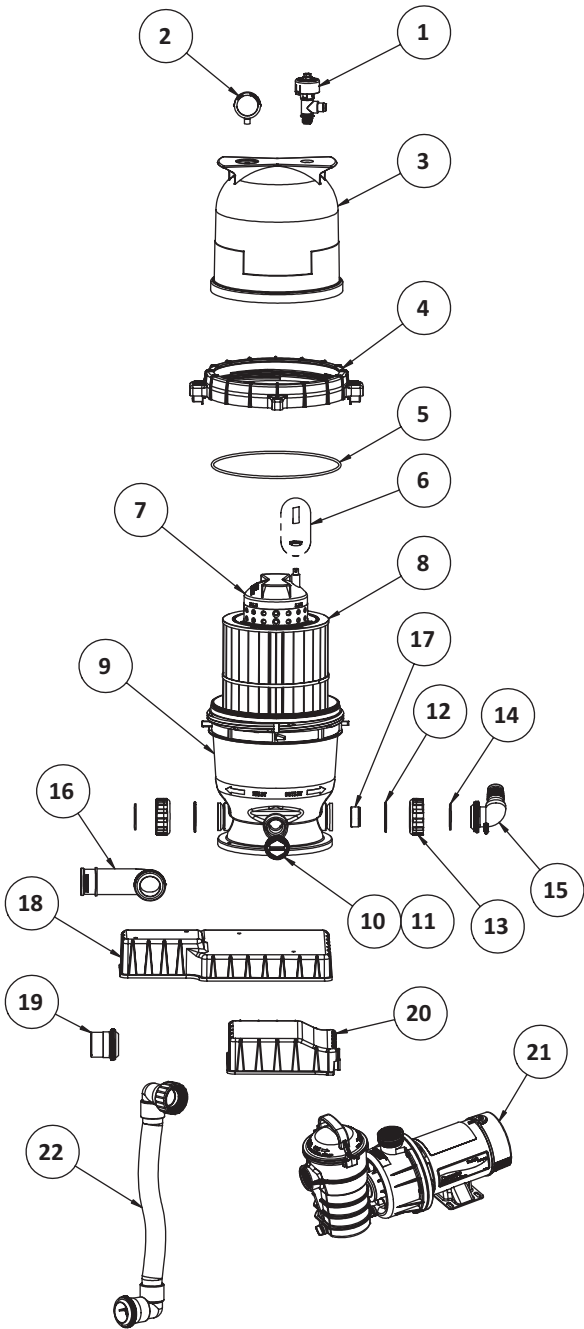


# CLEAN & CLEAR® FILTER SYSTEMS

## REPLACEMENT PARTS FOR SYSTEMS MANUFACTURED PRIOR TO 2009



<sup>2</sup> Used on filters manufactured after 3/98.

<sup>3</sup> Used on filters manufactured before 11/98.

<sup>4</sup> Used on filters manufactured after 11/98.

<sup>5</sup> Used on filters manufactured after 1/01 with the Dynamo Pump.

Item	Part No.	Description
<b>CLEAN &amp; CLEAR FILTER SYSTEMS PRIOR TO 2009</b>		
1	98209800	High Flow™ Manual Air Relief Valve (HFMARV)
2	190058	Gauge, pressure
3	178553	Lid 50, 100 sq. ft., almond
3	178561	Lid, 75/150/200 sq. ft., almond
4	59052900	Locking ring assy.
5	87300400	Body O-ring
6	59016200	Air bleed sock kit
7	59053500	Center core 50 sq. ft.
7	59053600	Center core 75 sq. ft.
7	59053700	Center core 100 sq. ft.
7	59053800	Center core 150/200 sq. ft.
8	R173213	Cartridge element 50 sq. ft.
8	R173214	Cartridge element 75 sq. ft.
8	R173215	Cartridge element 100 sq. ft.
8	R173216	Cartridge element 150 sq. ft.
8	R173217	Cartridge element 200 sq. ft.
9	178562	Bottom 50 sq. ft., almond
9	178554	Bottom 75 sq. ft., almond
9	178563	Bottom 100 sq. ft., almond
9	178560	Bottom 150/200 sq. ft., almond
10	51516200	Drain cap <sup>3</sup>
10	86202000	Plug 1-1/2 in. drain, w/ O-ring <sup>4</sup>
11	86300500	Drain cap gasket <sup>3</sup>
11	51005000	O-ring, drain cap <sup>4</sup>
12	39104500	Union nut "C" clip
13	98212200	Union nut
14	071426	O-ring, union
15	39107400	Fitting elbow pump connector <sup>2</sup>
16	170037	Fitting elbow pump connector <sup>2</sup>
17	51516100	Check valve kit
18	170058	Base assy.
19	79304700	Body swivel w/ 1-1/2 in. NPT internal threads
20	178541	Chlorinator base
20	98200700	Bolt
20	155109	T-nut
21	<b>OptiFlo® Pump page 556; Dynamo® Pump Page 557</b>	
22	175015	Pump/filter connector, Dynamo <sup>5</sup>
22	170046	Pump/filter connector, OptiFlo
<b>NOT SHOWN</b>		
	354571	O-Ring (Union)